



170002280708



(2017)国认监认字(134)号



中国认可
国际互认
检测
TESTING
CNAS L0454

Report No. T14-B320-20-111

Special Equipment Type Test Report (Lift)

Category of equipment: Lift major component

Type of equipment: Control cabinet

Name of product: Lift control cabinet

Model of product: SJT-WVF5

Applicant: Shenyang Bluelight Automatic Technology Co., Ltd.

Manufacturer: Shenyang Bluelight Automatic Technology Co., Ltd.

Category of type test: First check

Test date: 2020-08-05

NETEC

National Elevator Inspection and Testing Center

NOTICE

1. Type test report is according to TSG T7007-2016 *Regulation for type tests of lifts*.
2. Type test report is invalid without signatures of test, verification and approval. It is also invalid without stamping the *Test Report Specialized Stamp* or paging seal.
3. Each type test certificate issued by NETEC is corresponding to one type test report at least, and test conclusions of these type test reports are certificated.
4. Type test certificate is invalid without stamping the *Test Report Specialized Stamp* or issue date.
5. All contents of the test report and certificate issued by NETEC shall be printed out by computer except for the signature of the person in charge. Handwriting or any alteration is invalid, and any partial copy is also invalid.
6. Type test report is only valid for the sample. Applicant is responsible for the authenticity of the information and technical documents of the sample.
7. Different opinions about type test conclusion should be reported to NETEC within 15 workdays since receiving of type test report and certificate.
8. Paper version of the test report and certificate issued by NETEC in triplicate, NETEC files one, applicant keeps the other two.
9. It should be subject to the Chinese version, while the English version is for reference only.

NETEC National Elevator Inspection and Testing Center

Add: 61 Jinguang Ave., Guangyang District, Langfang, Hebei
065000, P.R.China

Tel: +86 316 2311414, +86 316 2632627 Fax: +86 316 2057334


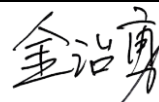
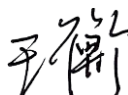
Email: netec@chinaelevators.org

[Http://www.netec-china.com](http://www.netec-china.com)

Contents

Lift type test report	Page 1
1 Technical parameters and configuration of the sample.....	Page 2
2 Check the technical documents	Page 3
3 Check and test the sample	Page 3
4 Sample photos.....	Page 4
5 Change information of type test report	Page 4



Category of equipment	Lift major component		
Type of equipment	Control cabinet		
Name of product	Lift control cabinet		
Model of product	SJT-WVF5		
Product number	K2006018	Manufacturing date	2020-06-18
Unified social credit code of applicant		91210112604650397R	
Applicant	Shenyang Bluelight Automatic Technology Co., Ltd.		
Registered address of applicant	No.37 Shiji Road, Hunnan New District, Shenyang, Liaoning		
Manufacturer	Shenyang Bluelight Automatic Technology Co., Ltd.		
Registered address of manufacturer	No.37 Shiji Road, Hunnan New District, Shenyang, Liaoning		
Manufacturing address	No.99 Chuangxin 1st Road, Hunnan New District, Shenyang, Liaoning		
Test place	Shenyang Bluelight Automatic Technology Co., Ltd.		
Receiving date	/	Sample No.	/
Sample state	No abnormal	Category of type test	First check
Test date	2020-08-05		
Test condition	Ambient temperature: 28.6℃, relative humidity: 55%, voltage: AC 385V		
Test basis	TSG T7007—2016 <i>Regulation for type tests of lifts</i> GB 7588—2003+XG1—2015 <i>Safety rules for the construction and installation of electric lifts</i>		
Test conclusion	Certificated.		
Reported by: 		Approval certificate of type test institute No. TS7610014-2021 Issue date: 2020-08-14	
Verified by: 			
Issued by: 			

1 Technical parameters and configuration of the sample

Name of product		Lift control cabinet
Model of product		SJT-WVF5
Rated speed of the lift		4.00m/s
Rated power of the lift machine		75kW
Protection degree		IP2X
Location		Outside of the well
Explosion protection type		/
Explosion protection grade		/
Emergency and test operation device		Unequipped
Model of automatic rescue operation device		ARD2S
Energy feedback device		Equipped
Firefighter operation mode		Equipped
Applicable environment		Indoor
Applicable type of lifts		Traction drive passenger lift, traction drive goods lift, firefighter lift
Control function of lift operation	1) Control of levelling and re-levelling with doors open 2) Control of inspection operation 3) Control of emergency electrical operation 4) Detection of unintended car movement with doors open (detection subsystem of unintended car movement protection means) 5) Priority recall and fire service function for firefighter lift	
Speed control device	Model	BL6-UO4075-M
	Speed control mode	Variable frequency speed control
	Rated voltage	380V
	Rated power	75kW
	Rated frequency	50Hz/60Hz
	Rated current	165A
	Manufacturer	Shenyang Bluelight Automatic Technology Co., Ltd.
Control device	Model	MU_V61
	Type	Micro-processor
	Control mode	Selective collective control
	Communication mode	Serial
	Maximum stops	64/64
	Manufacturer	Shenyang Bluelight Automatic Technology Co., Ltd.

1 Technical parameters and configuration of the sample (continued)

Electrical safety device	Safety circuit	Model	SJT-ZPC-V2A
		Function	Control of levelling and re-levelling with doors open, detection of unintended car movement with doors open
		Manufacturer	Shenyang Bluelight Automatic Technology Co., Ltd.
<div>Consistency check with the first type test sample</div> <div>1. The basic information of the product is consistent with the type test sample.</div> <div>2. The main configuration of the product is consistent with the type test sample.</div>			

2 Check the technical documents

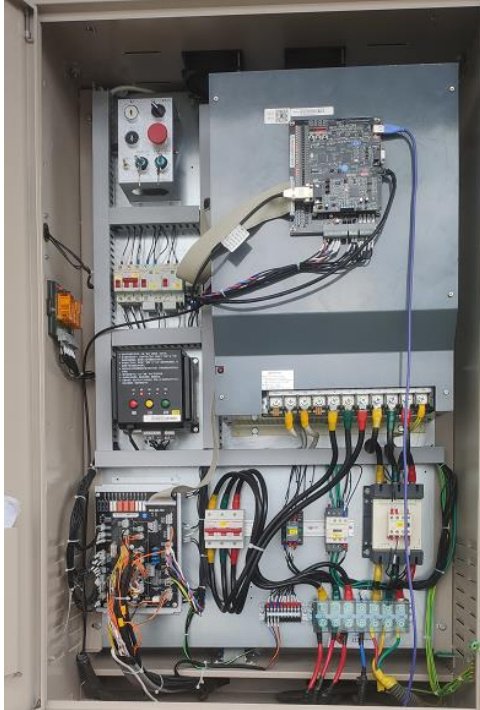
No.	Items No.	Check items	Check results	Conclusion
1	V5.1	Conformity certificate documents and instructions	Comply with requirements	Pass
2	V5.2	Technical document for main construction parameter	Comply with requirements	Pass
3	V5.3	Relative technical document	Comply with requirements	Pass
4	V5.5	Application range and design document	Comply with requirements	Pass

3 Check and test the sample

No.	Items No.	Check and test items	Check and test results	Conclusion
1	V6.1.1	Electrical equipment and installation	Comply with requirements	Pass
2	V6.1.2	Insulation resistance, voltage resistance, electromagnetic compatibility	Comply with requirements	Pass
3	V6.1.3	Protection against electric faults	Comply with requirements	Pass
4	V6.1.4	electric safety devices	Comply with requirements	Pass
5	V6.1.5	Protection of the motor	/	/
6	V6.4.1	Symbol of stop switch	Comply with requirements	Pass
7	V6.4.2	Symbol of operation	Comply with requirements	Pass
8	V6.4.3	Nameplate	Comply with requirements	Pass



4 Sample photos



Control cabinet



Automatic rescue
operation device



Energy feedback device

5 Change information of type test report

When the name or address of the applicant and the overseas manufacturer changed, the applicant should submit the change application and the corresponding supporting information to NETEC. After confirmation, NETEC should indicate the change on the attached page "Change information of type test report", take back the original type test certificate and issue a new one.
